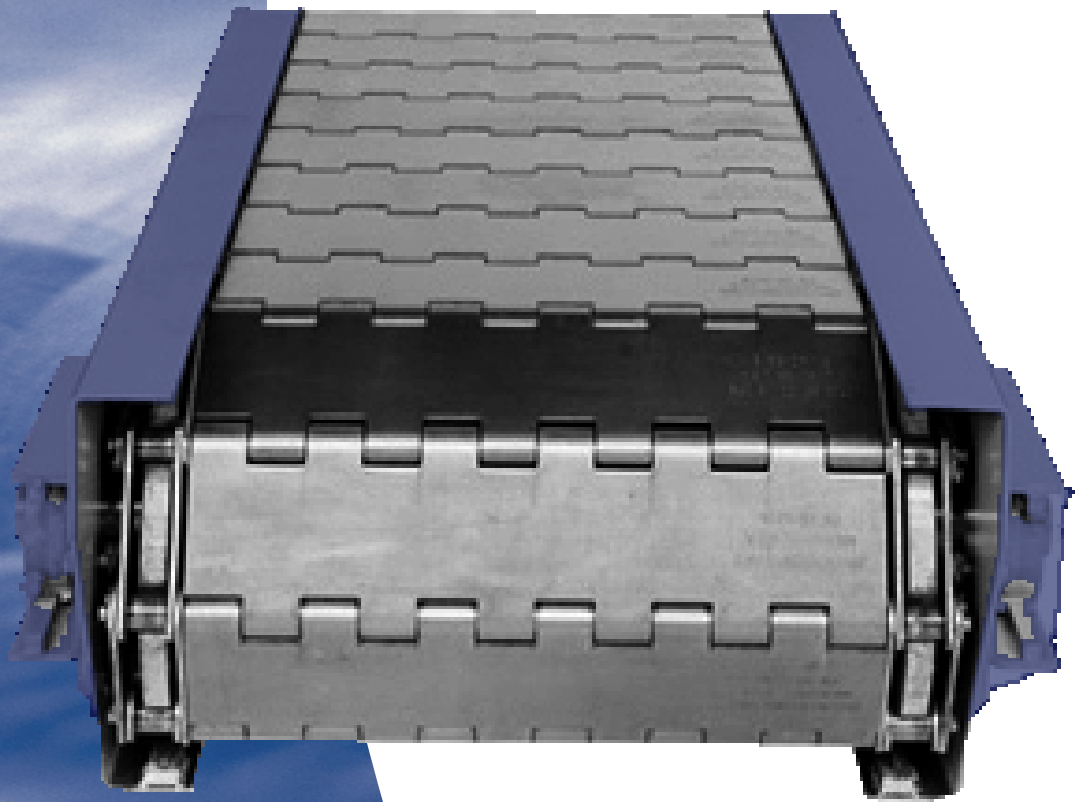




Jorgensen[®]
CONVEYORS, INC.

**4" Flat
Top Belt
Conveyor**



APPLICATION:

Ideal for handling parts, stampings, scrap. Perfect for drying, cooling, testing, draining, accumulating and assembly line processes.

FEATURES:

WIDTH:

Starting at 6" minimum featuring one piece construction in 3" increments - special widths available upon request. Cold rolled and stainless steel available. Perforated, pimpled, perforated and pimpled, plain.

DRIVE:

Heavy duty motor and speed reducer, size depending on belt speed and load.

FRAME:

Formed heavy gauge steel, stationary or portable.

BEARINGS:

Grease sealed, self-aligning ball bearings.

SAFETY OPTIONS:

Ratchet clutch or torque limiter.

DRAINAGE OPTIONS:

Belt with coolant drainage perforations and leak-proof formed casing.

FLAT-TOP STEEL BELT CONVEYOR



"CUSTOM ASSEMBLED"

All conveyors are custom fabricated to customer's requirements to insure proper fit.

Conveyor can be fabricated with coolant reservoir for machine tool applications where cutting oil and coolant is involved. Tank configuration per customer's requirements.

For complete design flexibility you get a choice of conveyor type with any reasonable length legs and angles, belt design and width, and drive systems with optional safety equipment.



Jorgensen
CONVEYORS, INC.

10303 N. Baehr Road • Mequon, Wisconsin 53092-4611
Phone: (800) 325-7705 • Fax: (262) 242-4382
E-Mail: info@jorgensenconveyors.com
www.jorgensenconveyors.com