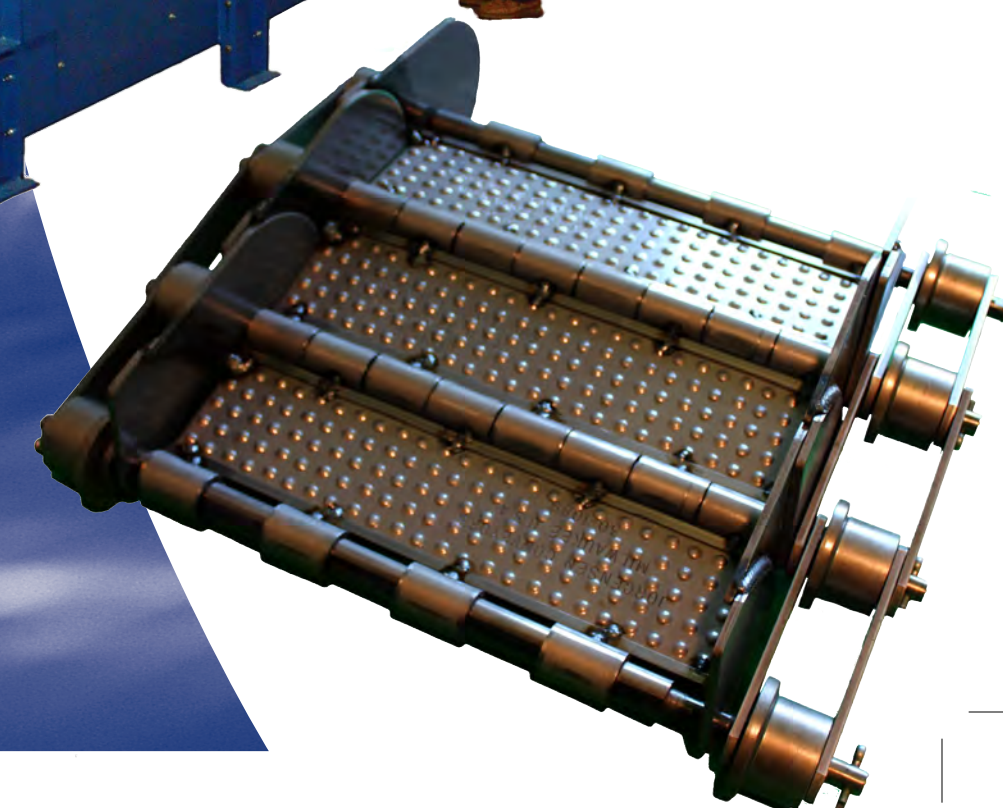


6" Pitch Hinged Steel Belt Conveyors



10303 N. Baehr Road
 Mequon, Wisconsin 53092-4611
 Phone: (262) 242-3089 or (800) 325-7705
 Fax: (262) 242-4382
 E-Mail: info@jorgensenconveyors.com
 www.jorgensenconveyors.com

BULLETIN 83-21 Rev. 0217

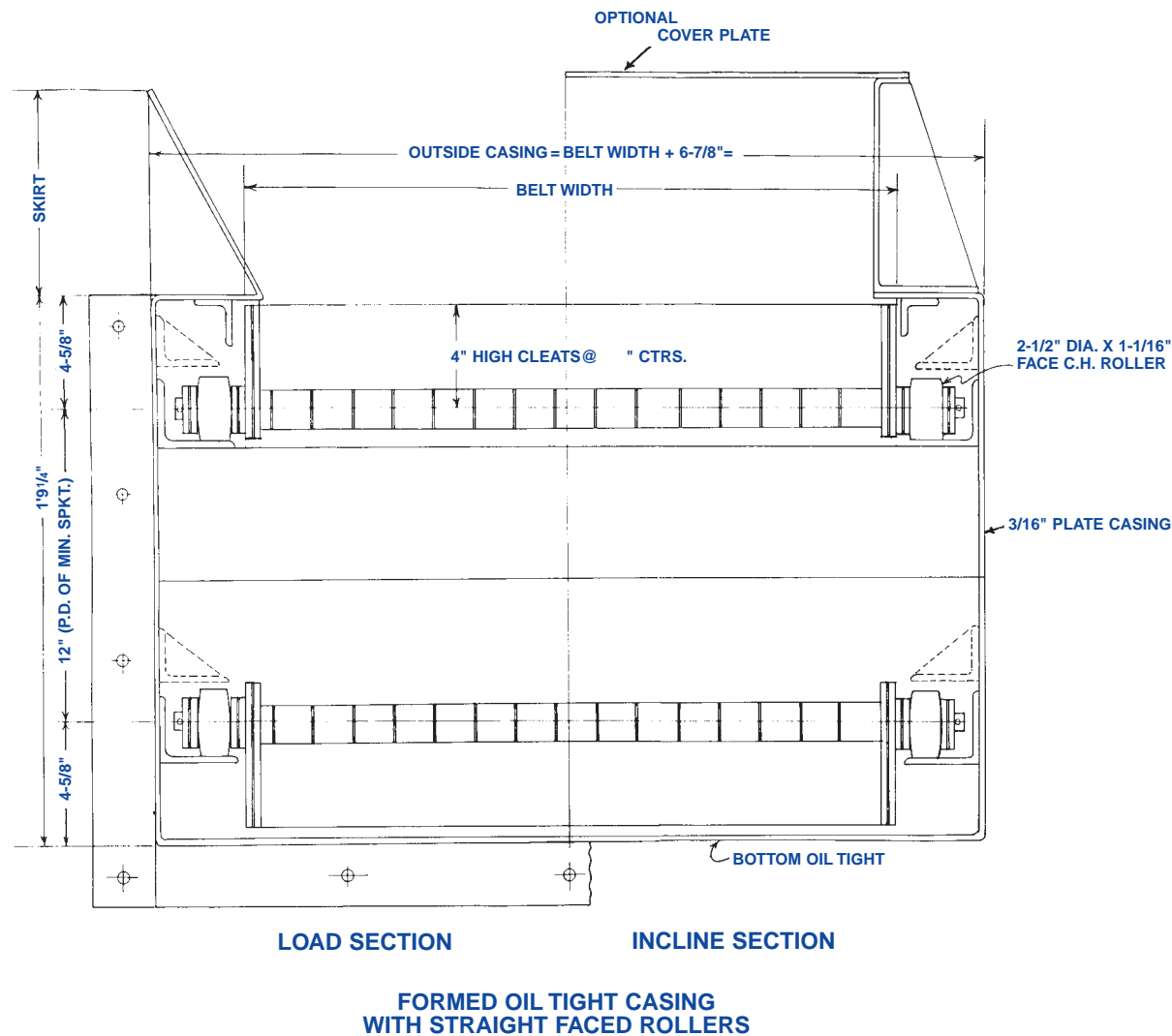


APPLICATIONS:

Ideally applicable for long and central collector conveyors in systems. Heavy scrap and parts conveying. Heavy duty applications where lighter duty conveyors are not applicable.

EXAMPLES:

Steel Mills
Forge Shops
Die Cast Shops
Scrap Handling
Refuse Handling



NO. USA-600:

- PITCH:** 6" – accuracy held to plus or minus .001" minus .002".
- APRON PLATES:** Special No. 5 gauge steel with integral formed hinge loop for thru spanner tube formed with precision dies with hinge loops accurately straightened by special sizing equipment. Can be furnished plain, perforated, or pimpled.
- SIDE WINGS:** Exclusive J.C.I. radial design feature of special 1/4" thick Exten steel welded to form a continuous overlapping side with close tolerances arranged for thru axle to pass thru to form an integral apron. Flush surface on inside.
- SIDE BARS:** Inside and outside chain 1/4" thick Exten steel side bars.
- SPANNER TUBES:** Special 1" O.D. with close tolerance to insure strength and maintain flexibility.
- THRU ROD:** 3/4" diameter – C-1045 C.R. steel, ends heat treated and milled for side bar to prevent rod from rotating.
- CHAIN BUSHINGS:** Heavy wall for accuracy and roundness with ends milled to fit special punched side bar to prevent rotating.
- ROLLERS:** 2 1/2" diameter x 1 1/8" tread or 3" diameter single flange rollers with 1 1/8" tread, chrome-nickel alloy iron with bore held to .002" tolerance on bushing.

* Cast or flame cut sprockets with various number of teeth and bores available.

