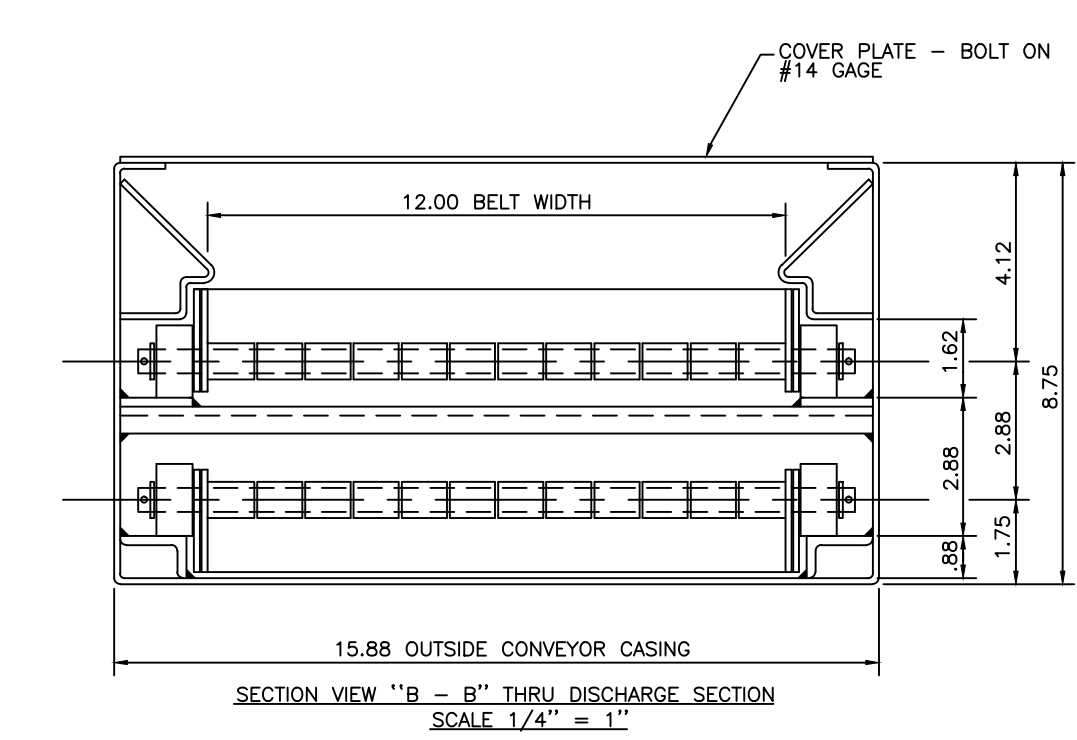
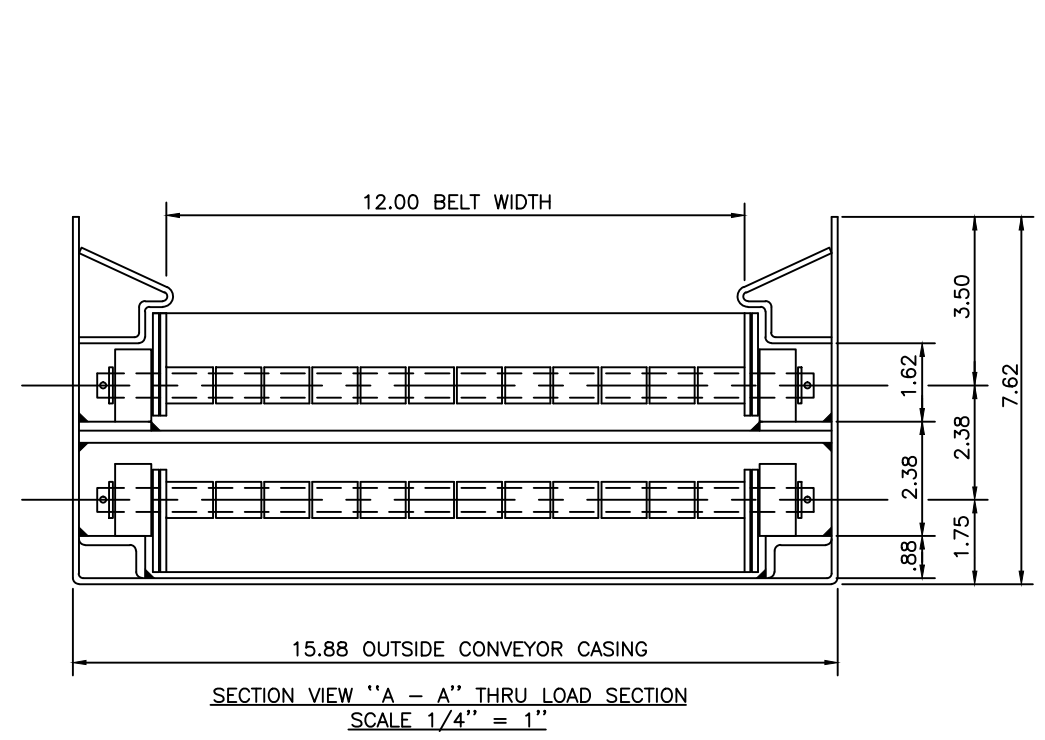


NOTE:  
LOAD LENGTH CUT PER ROUTING INSTRUCTION

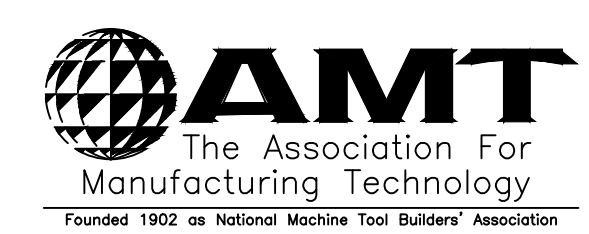
#	"A"-LOAD SECTION	"B"-O.A. LENGTH
01	60.00	115.00
02	96.00	151.00
03	36.00	91.00
04	48.00	103.00
05	72.00	127.00
06	84.00	139.00

PIANO HINGED METAL BELT  
JCI # US-241 2.50 PITCH x 12.00 WIDE  
PIMPLED BELT WITH 1.50 HIGH ANGLE  
CLEATS WELDED TO THE BELT AT  
12.50 CENTERS



**GENERAL DATA**

- TYPE OF MATERIAL HANDLED \_\_\_\_\_
- VOLUME \_\_\_\_\_
- MAXIMUM SIZE \_\_\_\_\_
- MAXIMUM WEIGHT \_\_\_\_\_
- CONVEYOR TO HAVE 1/4 H.P. 230/460 V. 3 PH. 60 CY. 14.38R.P.M.  
GEARMOTOR DRIVE AND ROLLER CHAIN DRIVE TO HEADSHAFT  
FOR CONSTANT SPEED OF 6 F.P.M.
- DRIVE MOUNTED NEAR SIDE WITH RATCHET CLUTCH ON DRIVEN SPROCKET
- CHAIN DRIVE TO HAVE TOTALLY ENCLOSED SHROUD
- WITH BOTTOM PLATE "COOLANT-TIGHT"
- WITH COVER PLATE @ INCLINE
- TYPICAL CROSS SECTION SEE VIEW(S) SECTIONS "A-A" & "B-B"
- CONVEYOR TO BE PAINTED 1 PRIMER COAT MACHINERY GRAY/JCI#20-1014
- CONVEYOR TO BE PAINTED 1 FINISH COAT NONE
- GUARDS TO BE PAINTED 1 COAT SAFETY ORANGE #F78E28-4357
- MOTOR TO BE FURNISHED BY JORGENSEN CONVEYORS INC.
- MOTOR CONTROLS AND WIRING BY PURCHASER
- BELT SPECS. 2.50" PITCH x 12.00" WIDE US-241 PIMPLED BELT WITH  
1.50" x 1.00" x 12 GA. FORMED ANGLE CLEATS SPOT WELDED TO THE BELT @  
12.50" CENTERS & (4) WIPER CLEATS EQUALLY SPACED ON THE BELT



**NOTICE**  
This drawing, including the principles of design, is the property of and is submitted by Jorgensen Conveyors, Inc. with the agreement that it is not to be reproduced, copied or loaned, in part or whole. It is not to be used in any matter that may constitute a detriment directly or indirectly to Jorgensen Conveyors, Inc. Acceptance of this drawing will be construed as an agreement to the above. This drawing or copies thereof to be returned to us upon request.

This drawing has been made with usual care. Jorgensen Conveyors, Inc. is not responsible for errors when it is used for construction or engineering purposes in any shop or by any Engineering Company other than our own.



NO.	DATE	BY	ECN	REMARKS
2	5/11/12	TGR	12-086	ADDED T03,T04,T05 & T06
1	2/19/10	DD	10-057	ADDED JCI PAINT #

REVISIONS  
AUTOCAD DRAWING  
DO NOT UPDATE MANUALLY

CUSTOMER LOCATION: JORGENSEN CONVEYORS, S INC. MEQUON, WI

ALL DIMENSIONS ARE IN INCHES UNLESS OTHERWISE SPECIFIED.

UNLESS OTHERWISE NOTED ON THE DRAWING, TOLERANCES SHALL BE AS SPECIFIED IN THE JCI TOLERANCE STANDARD WHICH IS FOUND IN SECTION 120 OF JORGENSEN ENGINEERING STANDARDS MANUAL. DO NOT SCALE DRAWING.

THIRD ANGLE PROJECTION

Jorgensen CONVEYORS, INC.  
10303 N. BAEHR RD. MEQUON, WI 53092  
PH #:(262)242-3089 FAX #:(262)242-4382

JCI STOCK UNITS - 12.00" WIDE

FINAL ASSEMBLY

DRAWN: JJB DATE: 12/1/00 FIRST JOB NO.: Q-971057  
CHECKED: WJW DATE: 12/1/00 SHEET: 1 OF: 1  
SCALE: 1/8 SIMILAR TO DWG. NO.: DWG. NO.: 41-5762-TXX