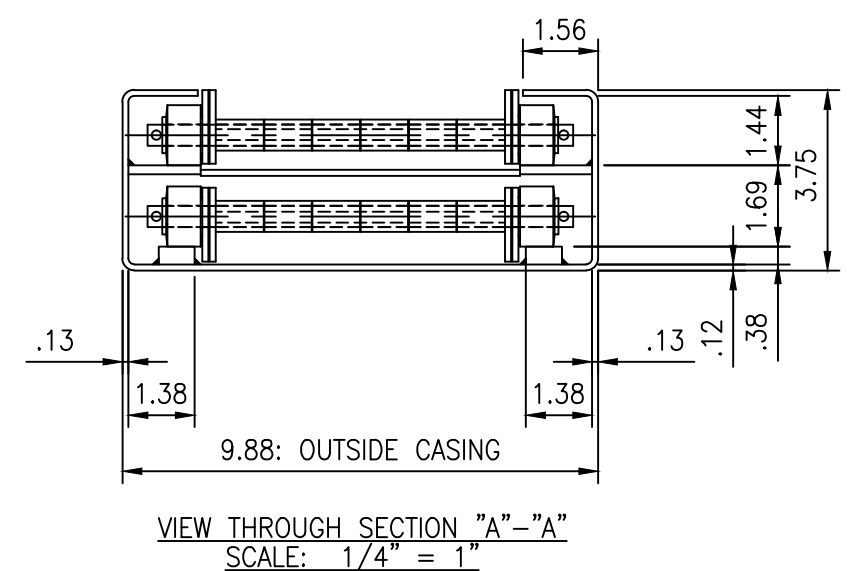
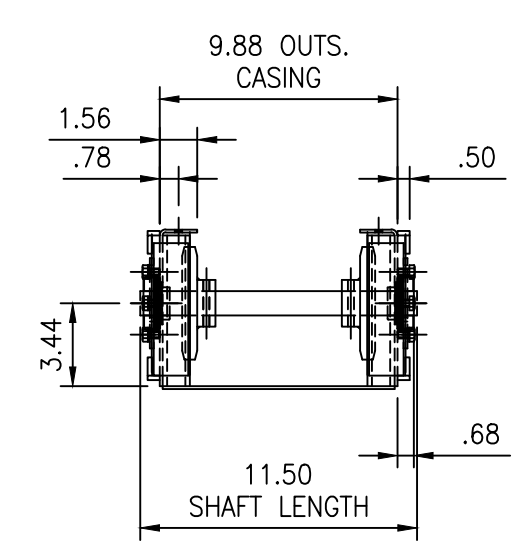
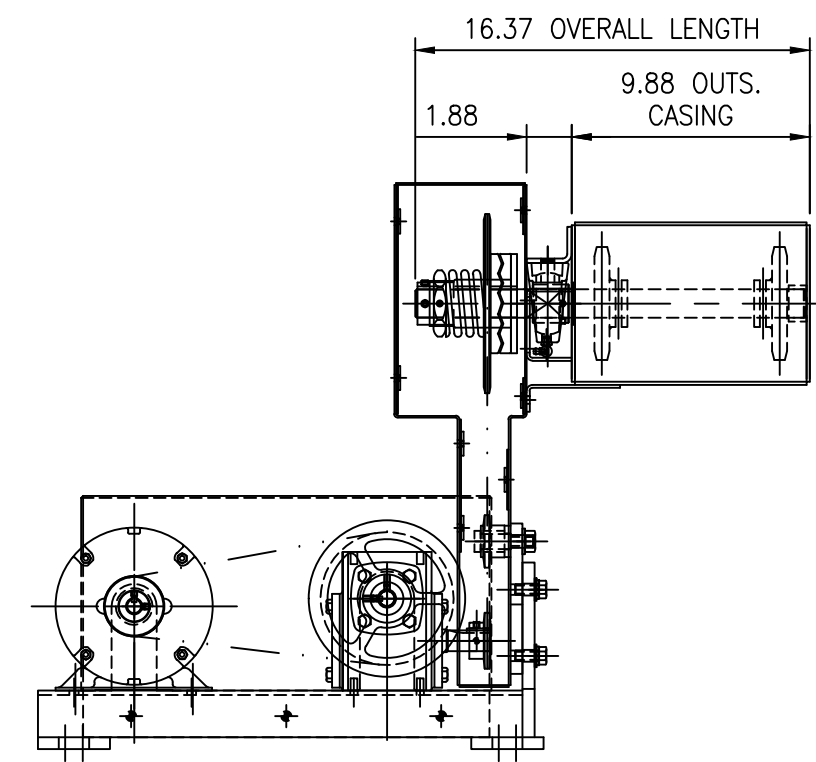
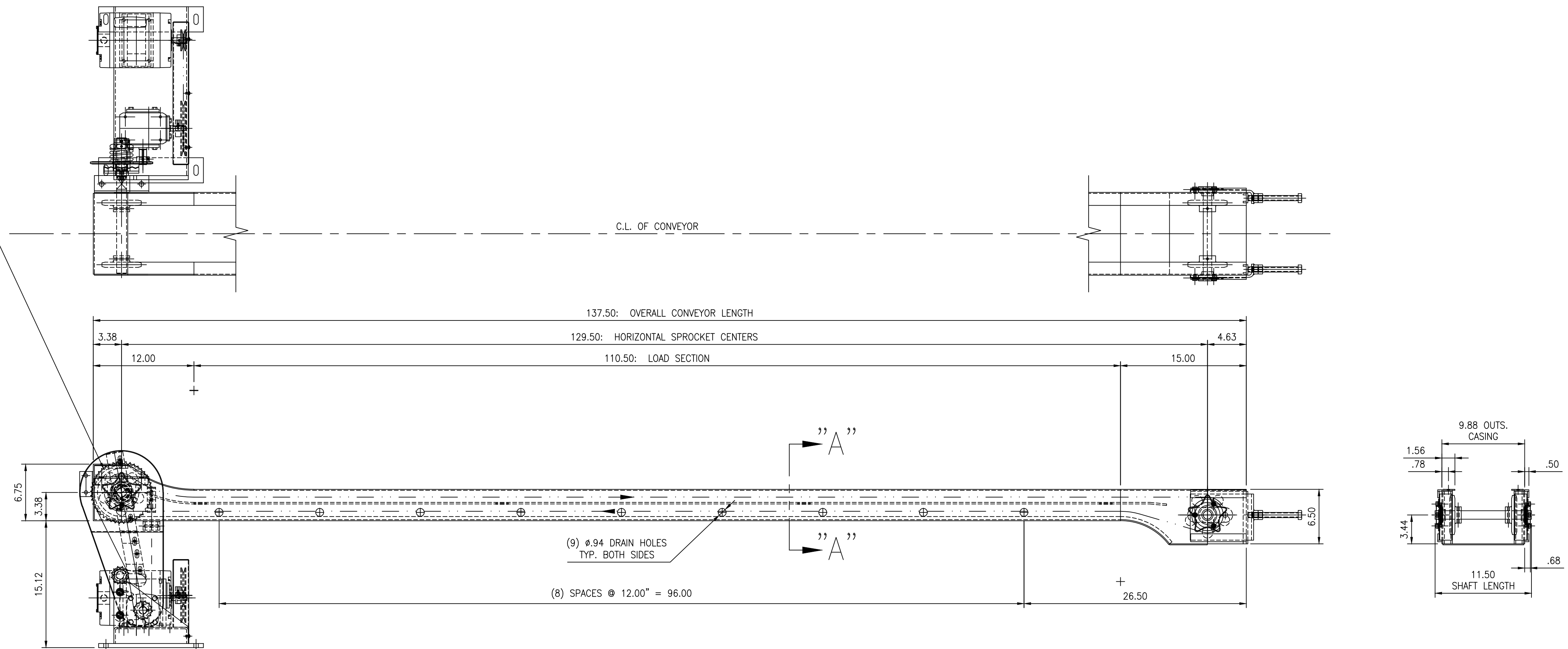


**DRIVE SPECS. (FAR SIDE MOUNT)**

1. LEESON ELECTRIC MOTOR 1/2 H.P., 460V., 3 PH., 60 Hz., 1725 RPM TENV 56 FRAME. F.L.A. @ 460V. 0.9, CAT# 100913.
2. BOSTON SINGLE REDUCTION REDUCER RIGHT ANGLE 1.75 SHAFT CENTERS REDUCER# 718-20-G.
3. MOTOR SHEAVE 2.5 O.D. .63Ø BORE REDUCER SHEAVE 6.5 O.D. .63Ø BORE "V" BELT 4L350.
4. DRIVE SPROCKET 40B13 .88Ø BORE DRIVEN SPROCKET 40B45 1.19Ø BORE WITH RATCHET CLUTCH. IDLER SPROCKET 40B12 0.88Ø BORE W/ 0.63Ø I.D. OILITE BUSHING
5. 14GA. CHAIN GUARD, "V" BELT GUARD & TAKE UP SLOT GUARD.
6. CONVEYOR RUNNING SPEED 10 F.P.M.



GENERAL DATA	
1 MATERIAL SPECIFICATIONS	
TYPE OF MATERIAL HANDLED:	VARIOUS CHIPS & STRINGERS
MATERIAL VOLUME:	UNKNOWN (PLEASE ADVISE)
MAXIMUM MATERIAL SIZE:	UNKNOWN (PLEASE ADVISE)
MAXIMUM MATERIAL WEIGHT:	UNKNOWN (PLEASE ADVISE)
2 CONVEYOR MOTOR SPECIFICATIONS	
HP:	1/2
VOLTAGE:	230/460
PHASE:	3
CYCLES:	60
R.P.M.:	14.17
DRIVE TYPE:	MOTOR W/ "V"-BELT DRIVE TO REDUCER & CHAIN DRIVE TO HEAD SHAFT
CONSTANT OR VARIABLE SPEED:	BELT/CHAIN SPEED: TO 0 FT./min.
SIDE OF DRIVE MOUNTING:	FAR SAFETY DEVICE: RATCHET CLUTCH
3 COOLANT TANK SPECIFICATIONS (IF APPLICABLE)	
CLEAN TANK CAPACITY:	SECONDARY FILTER:
4 COOLANT PUMP SPECIFICATIONS (IF APPLICABLE)	
COOLANT FLOW RATE:	TOTAL HEAD:
HP:	VOLTAGE:
F.L.A.:	R.P.M.:
5 CONTROL SPECIFICATIONS (IF APPLICABLE)	
CONTROLS SUPPLIED BY:	PURCHASER WIRING TO SYSTEM SUPPLIED BY: PURCHASER
J.C.I. PART NUMBERS:	
6 PAINT SPECIFICATIONS	
PRIMER COAT:	20-1014
FINISH COAT:	
7 CONVEYOR CONSTRUCTION INFORMATION	
BOTTOM PLATE:	"COOLANT-TIGHT" Ø INCLINE
COVER PLATE:	Ø INCLINE
CROSS SECTION VIEW(S):	THRU LOAD & INCLINE SECTIONS
8 BELT/CHAIN SPECIFICATIONS	
DESCRIPTION:	2.50" PITCH x 12.00" WIDE US-241 PERFORATED BELT
CLEAT INFO:	
WIPER INFO:	
ADDITIONAL INFO:	

**DRAWING APPROVAL REQUEST**

JORGENSEN CONVEYORS, INC.      Ph: 262-242-3089  
 10303 N. Baehr Road      Fax: 262-242-4382  
 Mequon, WI 53092      e-Mail: jorgen@TSRnet.com

Customer: FMC CORPORATION      Job # \_\_\_\_\_

Approved as is. Proceed with manufacture   
 Approved as noted. Proceed with manufacture, send final dwg.   
 Make changes as noted and resubmit for approval

Signed by: \_\_\_\_\_ Date: \_\_\_\_\_  
 Company: \_\_\_\_\_

In order to retain your position in our schedule, approved prints must be returned in 1 week. Delays may require rescheduling

CUSTOMER LOCATION: FMC CORPORATION, STEPHANVILLE, TX

NO.	DATE	BY	ECN	REMARKS

**REVISIONS**  
 AUTOCAD DRAWING  
 DO NOT UPDATE MANUALLY

ALL DIMENSIONS ARE IN INCHES UNLESS OTHERWISE SPECIFIED.

TOLERANCES UNLESS OTHERWISE SPECIFIED  
 .X ±.06  
 .XX ±.03  
 .XXX ±.015

ANGLES ±0'30"(±.5)  
 DO NOT SCALE DRAWING

THIRD ANGLE PROJECTION

**Jorgensen CONVEYORS, INC.**  
 CONVEYORS AND HANDLING EQUIPMENT FOR METAL WORKING INDUSTRIES

10303 N. BAEHR RD.      PH #:(262)242-3089  
 MEQUON, WI 53092      FAX #:(262)242-4382

**FINAL ASSEMBLY**  
 2.5" PITCH x 6" WIDE CHIPVEYOR

DRAWN: **BJP**      DATE: 08/21/07      FIRST JOB NO.: A070889/S072185  
 CHECKED: \_\_\_\_\_      DATE: \_\_\_\_\_      SHEET: 1 OF 1  
 SCALE: 1/8"      SIMILAR TO DWG. NO.: A-801156      EMP. NO.: 42-0891



**NOTICE**

This drawing, including the principles of design, is the property of and is submitted by Jorgensen Conveyors, Inc. with the agreement that it is not to be reproduced, copied or loaned, in part or whole. It is not to be used in any matter that may constitute a detriment directly or indirectly to Jorgensen Conveyors, Inc. Acceptance of this drawing will be construed as an agreement to the above. This drawing or copies thereof to be returned to us upon request.

This drawing has been made with usual care. Jorgensen Conveyors, Inc. is not responsible for errors when it is used for construction or engineering purposes in any shop or by any Engineering Company other than our own.

