

Hinged Steel
Belt Conveyors



Drag Flight
Conveyors



Magnetic
Conveyors



Permanent Media
Drum Filtration
System



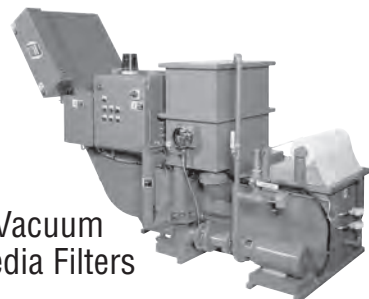
EcoFilter Conveyor



Gravity Media
Filters



Vacuum
Media Filters



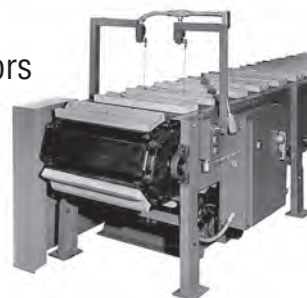
High
Pressure
Coolant
Systems



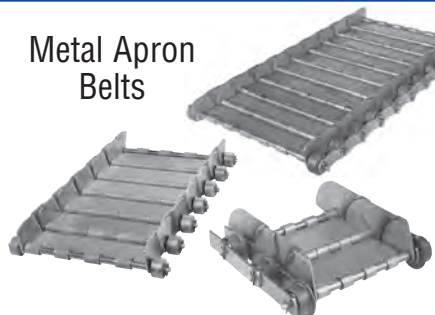
Wire Mesh
Belt Conveyors



Slat
Conveyors



Metal Apron
Belts

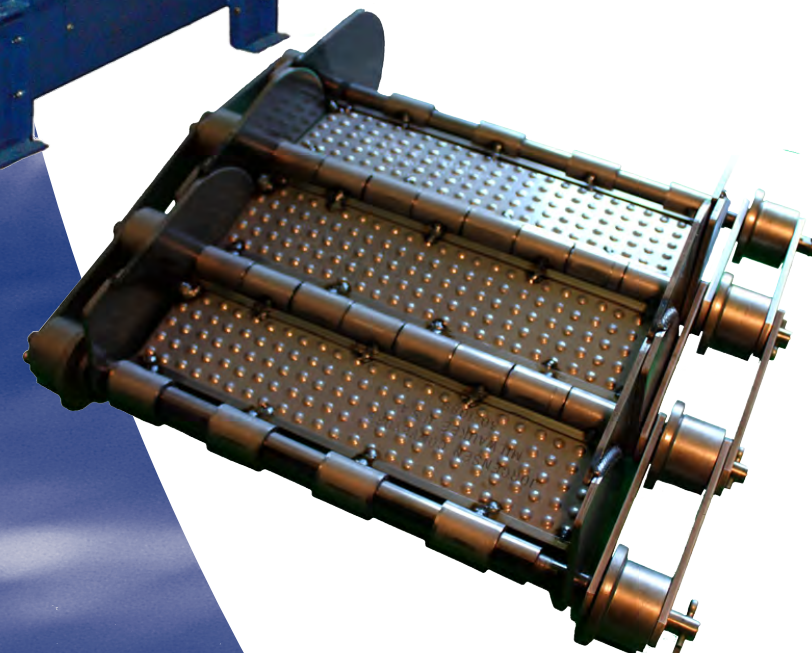


Steel
Bushed
Sidebar
Chain



Jorgensen
CONVEYORS, INC.

6" Pitch Hinged Steel Belt Conveyors



Jorgensen
CONVEYORS, INC.

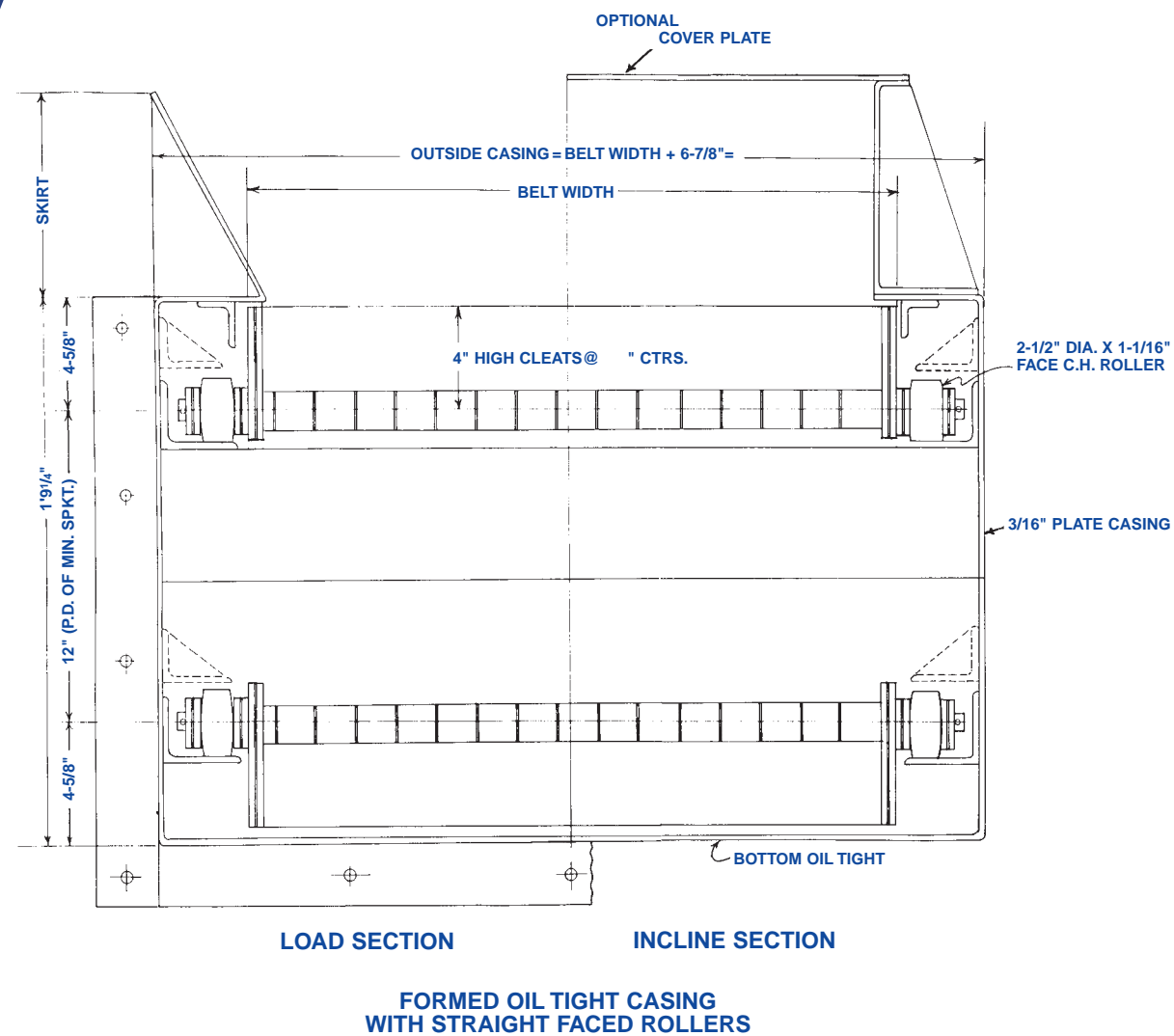
10303 N. Baehr Road
Mequon, Wisconsin 53092-4611
Phone: (262) 242-3089 or (800) 325-7705
Fax: (262) 242-4382
E-Mail: info@jorgensenconveyors.com
www.jorgensenconveyors.com

BULLETIN 83-21 Rev. 0819



APPLICATIONS:

Ideally applicable for long and central collector conveyors in systems. Heavy scrap and parts conveying. Heavy duty applications where lighter duty conveyors are not applicable.



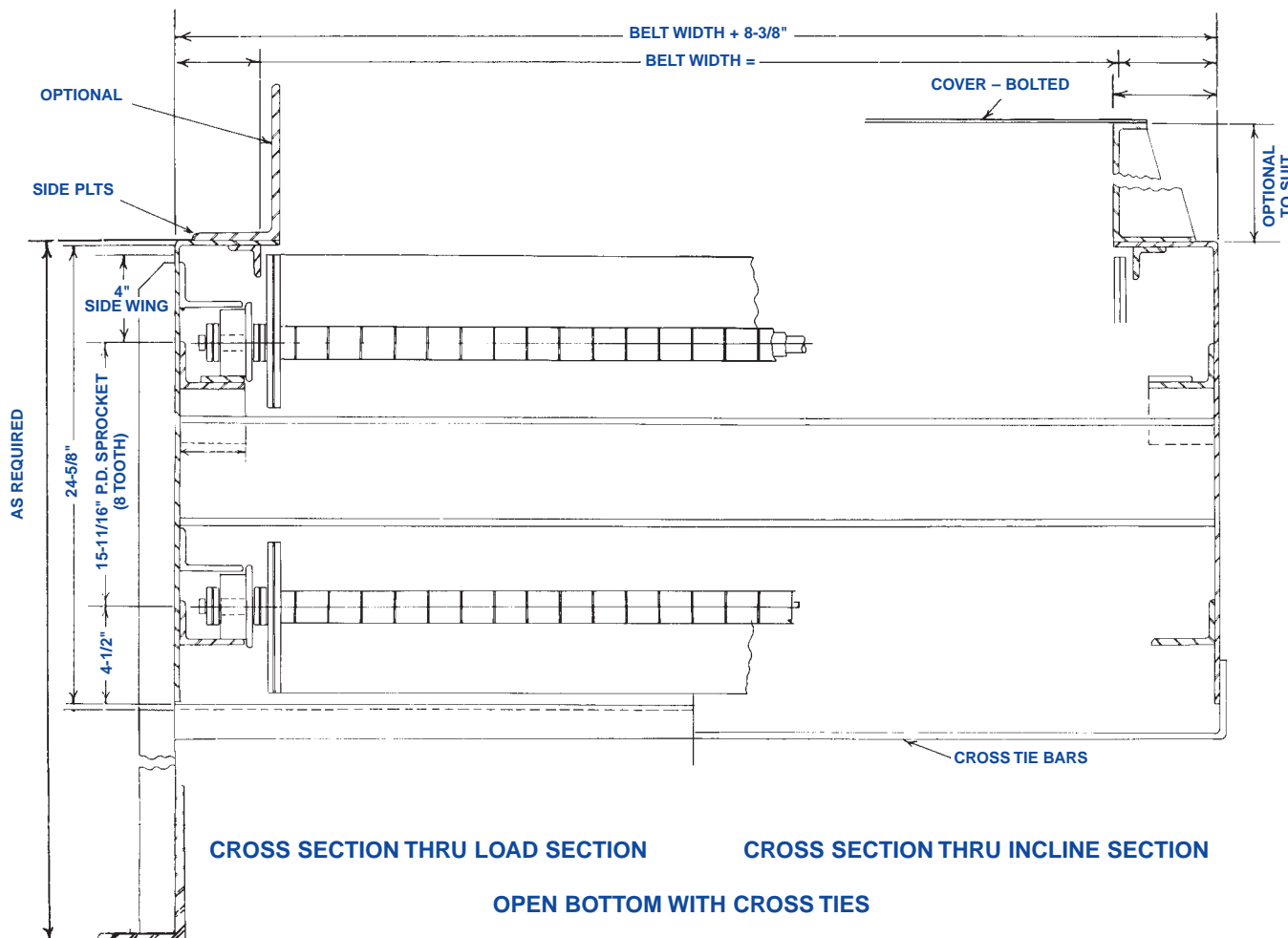
NO. USA-600:

- PITCH:** 6" – accuracy held to plus or minus .001" minus .002".
- APRON PLATES:** Special No. 5 gauge steel with integral formed hinge loop for thru spanner tube formed with precision dies with hinge loops accurately straightened by special sizing equipment. Can be furnished plain, perforated, or pimpled.
- SIDE WINGS:** Exclusive J.C.I. radial design feature of special 1/4" thick Exten steel welded to form a continuous overlapping side with close tolerances arranged for thru axle to pass thru to form an integral apron. Flush surface on inside.
- SIDE BARS:** Inside and outside chain 1/4" thick Exten steel side bars.
- SPANNER TUBES:** Special 1" O.D. with close tolerance to insure strength and maintain flexibility.
- THRU ROD:** 3/4" diameter – C-1045 C.R. steel, ends heat treated and milled for side bar to prevent rod from rotating.
- CHAIN BUSHINGS:** Heavy wall for accuracy and roundness with ends milled to fit special punched side bar to prevent rotating.
- ROLLERS:** 2 1/2" diameter x 1 1/16" tread or 3" diameter single flange rollers with 1 1/8" tread, chrome-nickel alloy iron with bore held to .002" tolerance on bushing.

* Cast or flame cut sprockets with various number of teeth and bores available.

EXAMPLES:

- Steel Mills
- Forge Shops
- Die Cast Shops
- Scrap Handling
- Refuse Handling



FORMED CASING WITH RAILS 6" PITCH

