

Hinged Steel
Belt Conveyors



Drag Flight
Conveyors



Magnetic
Conveyors



Permanent Media
Drum Filtration
System



Filterveyor®

EcoFilter® Conveyor
& Filtration System



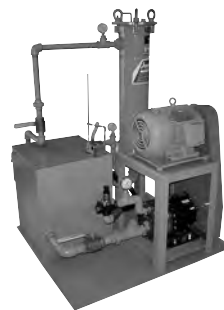
Gravity Media
Filters



Vacuum
Media Filters



High
Pressure
Coolant
Systems



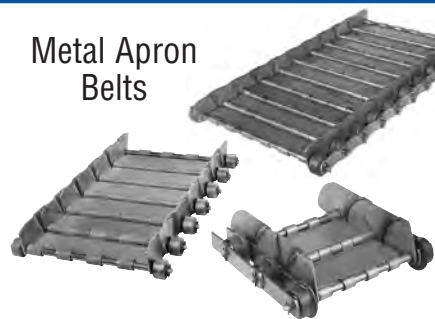
Wire Mesh
Belt Conveyors



MunchMan II®
Dual Belt
Conveyor



Metal Apron
Belts



Slat Conveyors



9" Pitch Hinged Steel Belt Conveyors



Jorgensen
CONVEYORS, INC.

Jorgensen
CONVEYORS, INC.

10303 N. Baehr Road
Mequon, Wisconsin 53092-4611
Phone: (262) 242-3089 or (800) 325-7705
Fax: (262) 242-4382
E-Mail: info@jorgensenconveyors.com
www.jorgensenconveyors.com

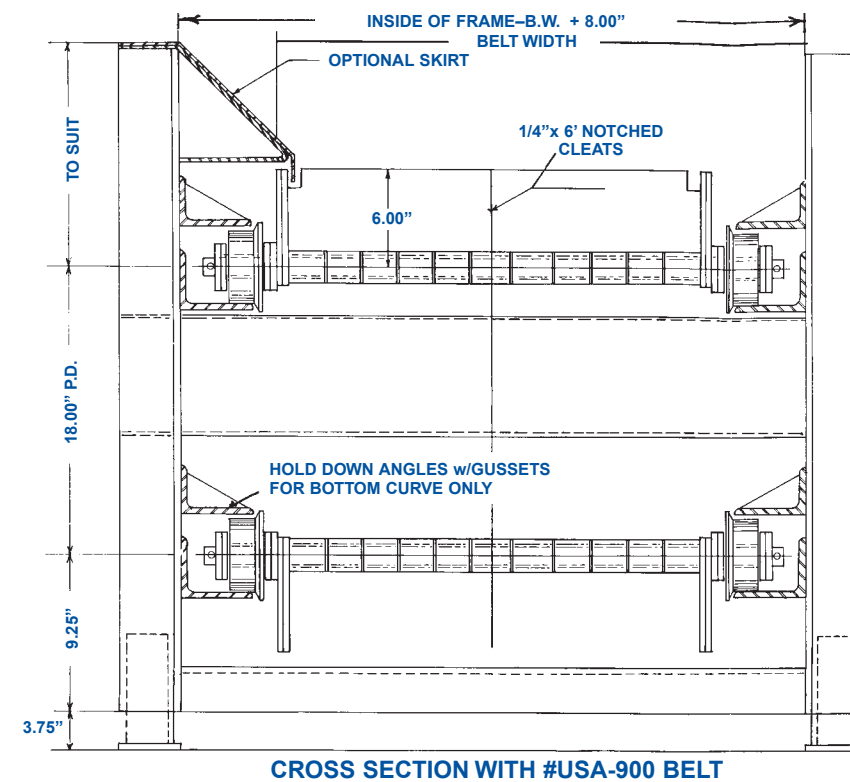
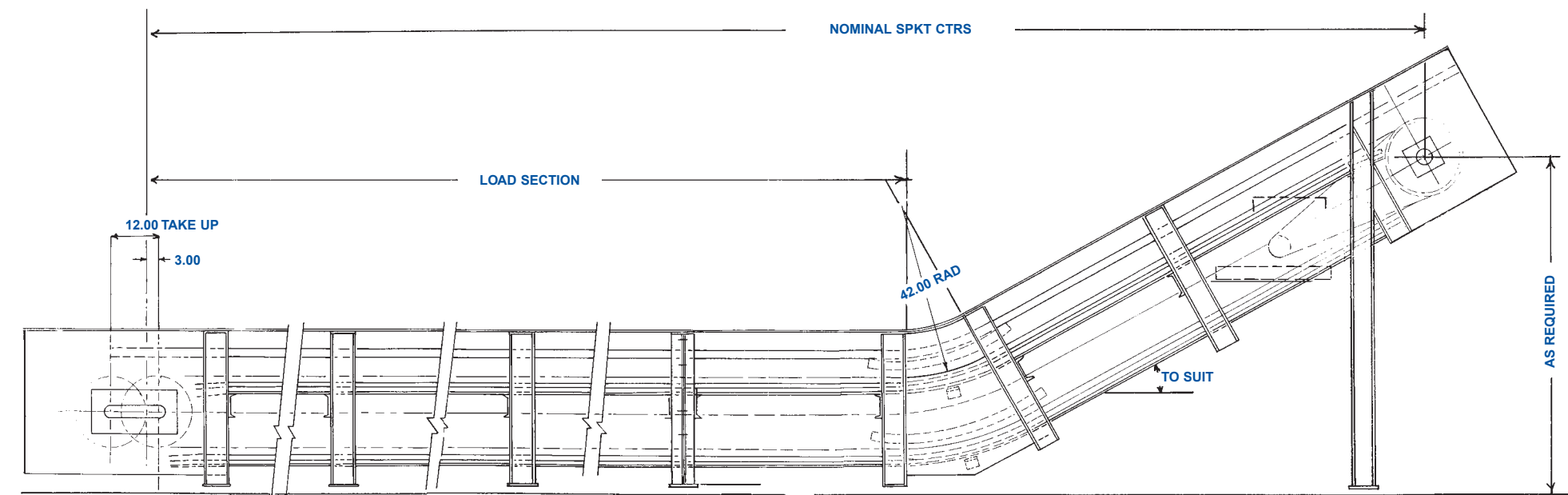


APPLICATION:

- Ideally applicable for long and central collector conveyors in systems.
- Heavy scrap and parts conveying.
- Heavy duty applications where lighter duty conveyors are not applicable.

EXAMPLES:

Steel Mills
Forge Shops
Die Cast Shops
Scrap Handling
Refuse Handling



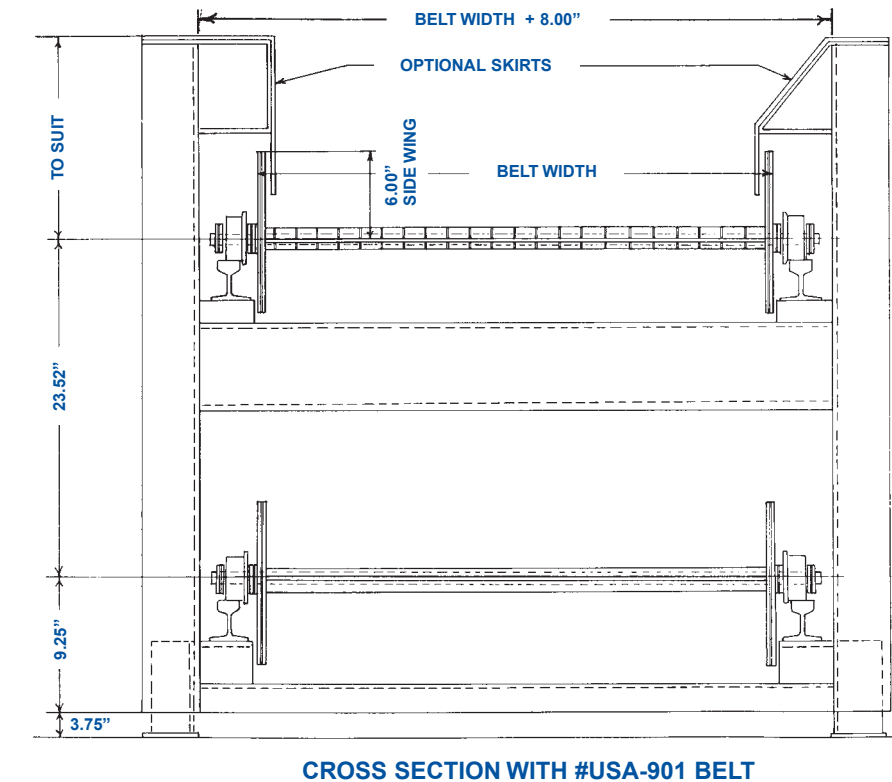
NO. USA-900 SPECIFICATIONS

PITCH: 9" – accuracy held to plus or minus .001"

APRON PLATES: Special No. 5 gauge steel with integral formed hinge loop for thru spanner tube formed with precision dies with hinge loops accurately straightened by special sizing equipment. Can be furnished plain, perforated, or pimpled.

SIDE WINGS: Exclusive J.C.I. radial design feature of special 1/4" thick Exten steel welded to form a continuous overlapping side with close tolerances arranged for thru axle to pass thru to form an integral apron. Flush surface on inside.

SIDE BARS: Inside and outside chain 1/4" thick Exten steel side bars.



SPANNER TUBES: Special 1" O.D. with close tolerances to insure strength and maintain flexibility.

THRU ROD: 3/4" diameter–C-1045 C.R. steel, ends heat treated and milled for side bar to prevent rod from rotating.

CHAIN BUSHINGS: Heavy wall for accuracy and roundness with ends milled to fit special punched side bar to prevent rotating.

ROLLERS: 2 1/2" diameter x 1 1/16" tread, 3" diameter single flange, with 1 1/8" tread, or 4" diameter single flange with 1 7/16" tread. Chrome-nickel alloy iron with bore held to .002" tolerance on bushing. 4" diameter rollers can be furnished with roller bearing hubs and threaded thru rods with locknuts.

• *Cast or flame cut sprockets with various number of teeth and bores available.*