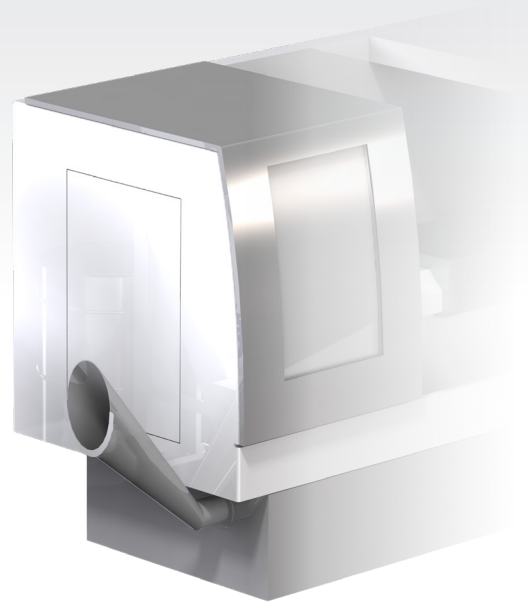


Auger Assist

Hinged steel belt conveyor to fit many machine tool makes and models equipped with auger evacuation systems.

An increased discharge height allows for larger collection containers, reducing costly labor for hopper management.



FEATURES

- Several inches of load chute height adjustment allows the unit to adapt to many different machine tool models
- Standard 48-inch discharge height
- Drain plug beneath the conveyor to reclaim residual coolant
- AR400 abrasion resistant steel and through-hardened components in all high-wear areas
- Compact and maneuverable with a 74"(L) x 25"(W) x 70"(H) footprint
- Lockable swivel caster wheels to easily move the conveyor
- Baffled load chute to efficiently direct chips

BENEFITS

- The adjustable metal chute can be rotated 90 degrees in either direction to fit your available floor space
- Pre-engineered design for a low cost and quick delivery
- Increased discharge height allows for collection of a higher chip volume, decreasing labor for chip removal
- Due to its small size and swivel wheels, this machine can easily be moved for maintenance or cleaning
- Works well with steel, aluminum, and other common metals
- Little to no set up required
- Durable low maintenance construction

APPLICATIONS

Chip Management for auger-equipped machine tools. Highly effective for broken chips of steel, aluminum, and composites. For added value, Auger Assist can easily integrate into larger chip management and processing systems.

The cost-effective Auger Assist conveyor is a valuable part of a clean and safe production environment!



HOW IT WORKS

1. Chips are removed from the machine tool via the machine tool's auger and chip flume/funnel.
2. Chips enter the Auger Assist via the adjustable baffled load chute
3. Chips are taken up the incline via a steel hinged belt
4. Residual coolant is collected in the bottom of the conveyor, with a drain plug to reclaim coolant
5. Chips are discharged at a standard height of 48 inches, allowing the use of larger collection bins

DESIGN OPTIONS

- No control
- Drum switch
- UVS control (variable frequency drive)
- 230 volt 3 phase 60 Hz or 460 volt 3 phase 60 Hz
- 2 speed options depending on volume
- Scraper or hinged steel belt
- EcoFilter and coolant tank options

The auger assist conveyor is a pre-engineered cost effective solution that can be adjusted to fit most machine tools. Custom design options are available such as increased discharge height, custom load chute dimensions, extreme-duty durability, and more.

Check out our website for a complete product list and more information.

Website: www.jorgensenconveyors.com
Email: info@jorgensenconveyors.com
Phone: 262-242-3089

